



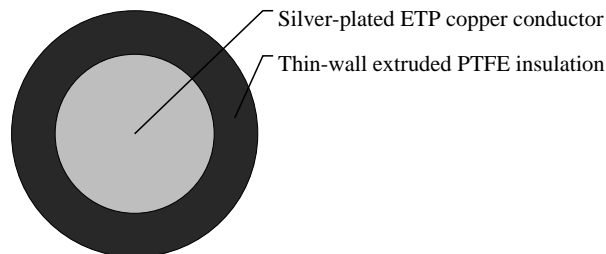
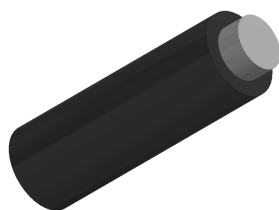
Caledonian

Military Cables

www.caledonian-cables.com

marketing@caledonian-cables.com

MIL-W-81822/6 Type A 1C24AWG



APPLICATIONS

These extruded thin wall PTFE (polyvinylidene fluoride) insulated single-core MIL-W-81822/6 cables are used in back panel wire wrap applications. These wires have solid conductors for wire-wrap applications such as back panel wiring, with a choice of three conductor materials.

VOLTAGE RATING

300V

CABLE CONSTRUCTION

Conductor: Silver-plated ETP copper

Insulation: Thin-wall extruded PTFE

COLOUR CODE

MIL-STD-104(See page 65)

PHYSICAL AND THERMAL PROPERTIES

Temperature Range: 200°C

DIMENSION AND PARAMETERS

AWG Size	Conductor Stranding	Conductor Diameter	Conductor Diameter	Overall Diameter (min.)	Overall Diameter (min.)	Overall Diameter (max.)	Overall Diameter (max.)	Approx. Weight	Max. Resistance at 20°C
		in	mm	in	mm	in	mm	LBS/MFT	OHMS/MFT
24	Solid	0.0201	0.511	0.04	1.02	0.044	1.12	2.4	26.5